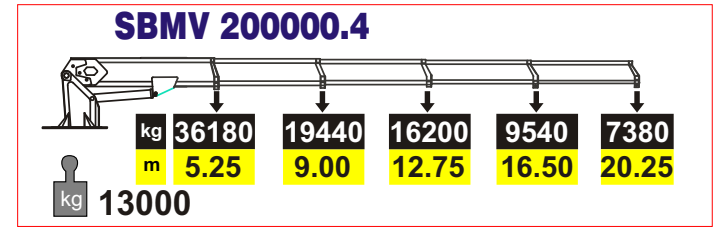
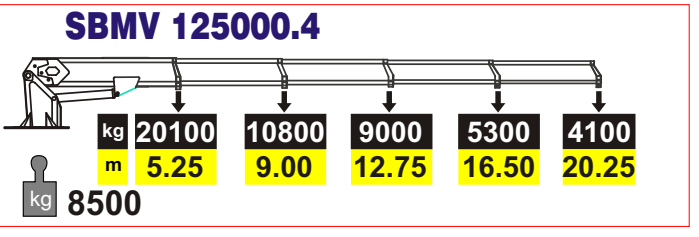
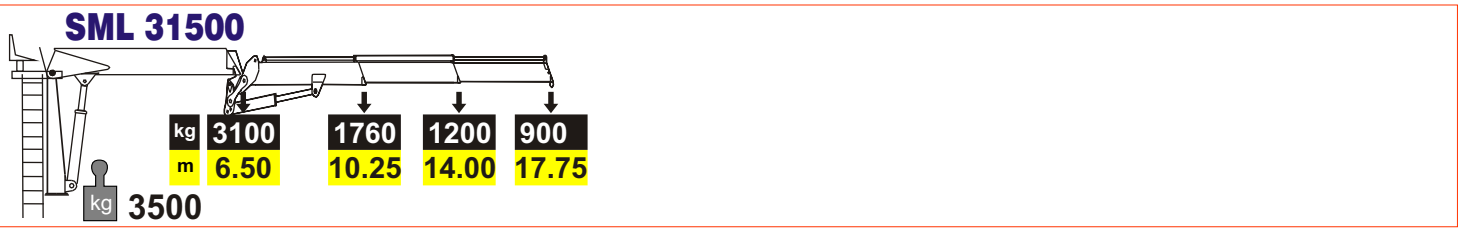
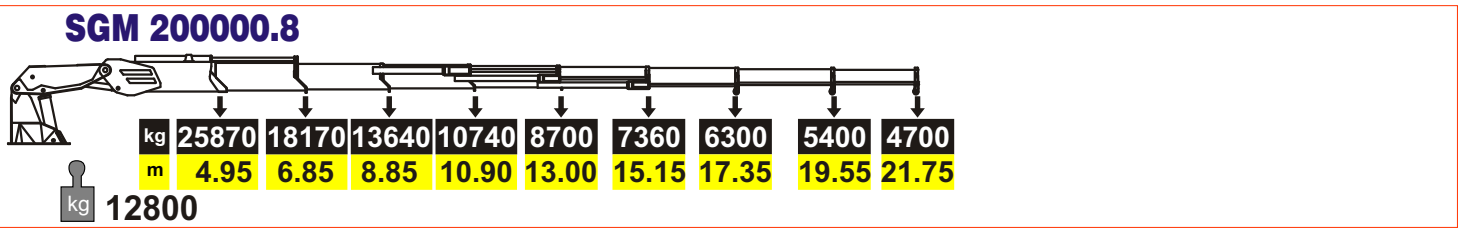
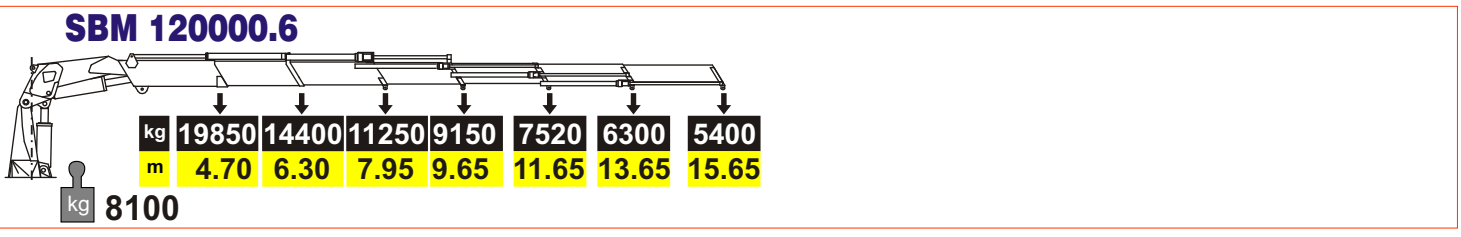
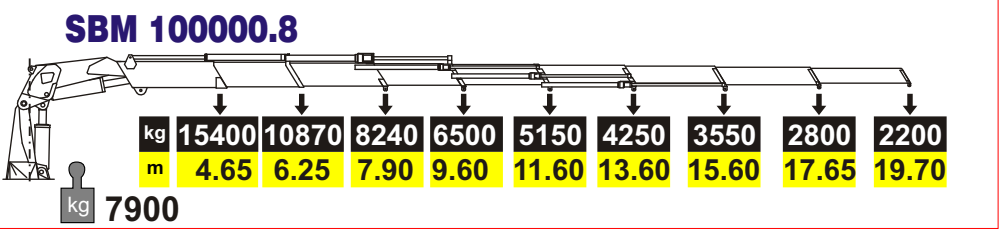
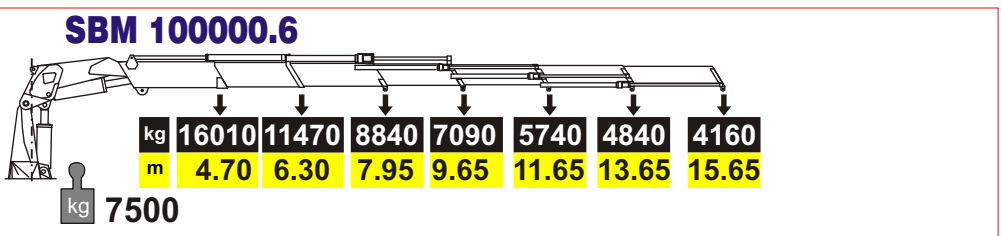
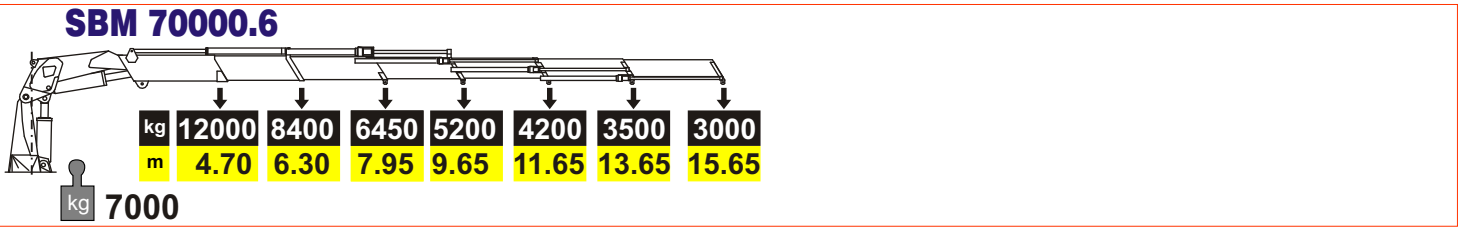
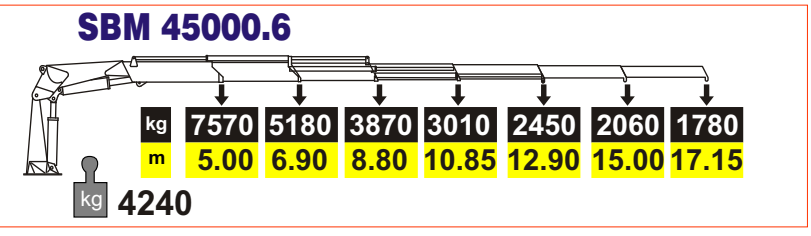
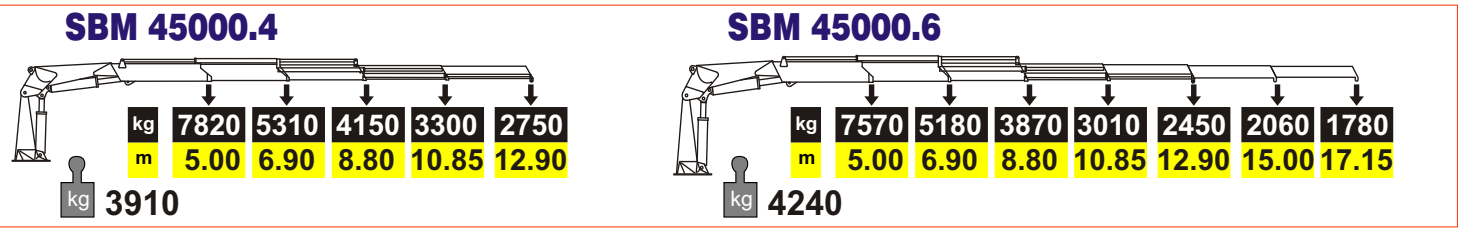
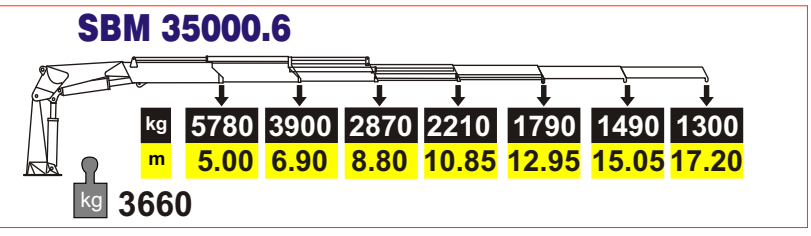
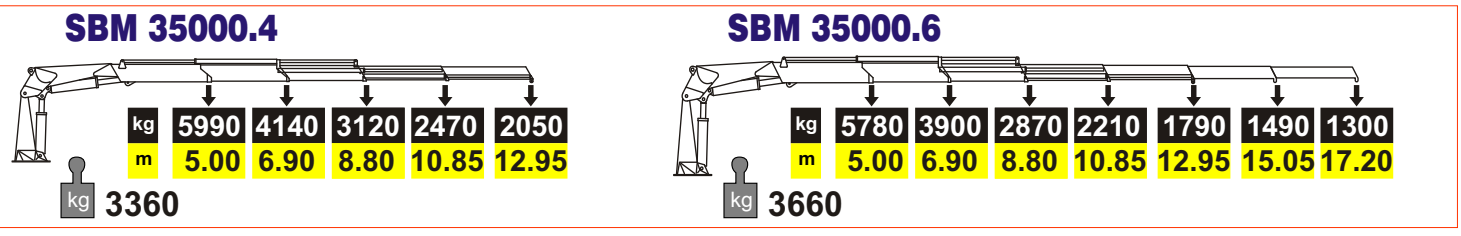


MARINE CRANES



Basamento rotondo o quadrato a richiesta.
Doppia rotazione.
Gru sabbiate SA 2,5.
Verniciatura marina con applicazione fondo zincante.
Steli martinetti sottoposti a trattamento nichel-cromo o doppia cromatura.
Raccordi, viti e tubi in acciaio inox.
Valvole, distributore e perni standard, non sottoposti a specifici trattamenti anti corrosione marina.



Round or square shaped base, on demand.
Double slewing cylinder.
Sand blasted SA 2,5.
Marine painting with application of zinc primer.
Nichel-chrome plating on rods or double chrome plating.
Fittings, screw and pipes in stainless steel.
Valves, oil distributor and fixing pins are standard, no treated with specific anti marine corrosion treatment.



Base pedestal de forma circular o cuadrada, como requerido.
Doble martinete de giro.
Arenadura SA 2,5.
Pintura anti corrosion marina con fondo galvanizado.
Tratamiento a base de nichel-cromo en los vastagos o doble-cromo.
Recordes, tornillos y tubos en acero inoxidable.
Valvulas, distribuidor y ejes son standard, sin ningun tratamiento especifico anti



Base ronde ou carrée, selon demande.
Double rotation.
Sablage SA 2,5.
Peinture marine avec application de base au zinc.
Tiges de s verins traités au nichel-chrome ou double chromage.
Raccords, vis et tuyaux rigides en acier inox.
Valves, distributeur, axes de fixation standard, sans aucun traitement specifique anti corrosion marine.



Via Bovi Campeggi, 6
40131 Bologna
e-mail: sterninternational@libero.it

