

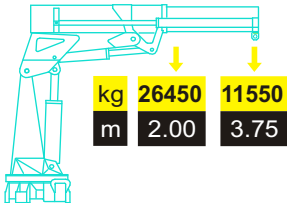
# STC STCB

THE BEST CRANES TO LIFT HEAVY LOADS AT SHORT DISTANCES  
LE GRU PIU' IDONEE PER IL SOLLEVAMENTO DI GROSSI PESI  
A BREVE DISTANZA



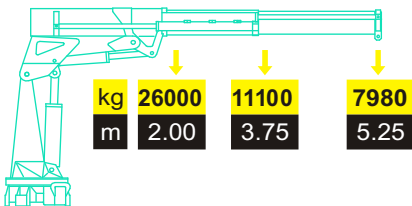
## STCB 51000.1

kg  
2850



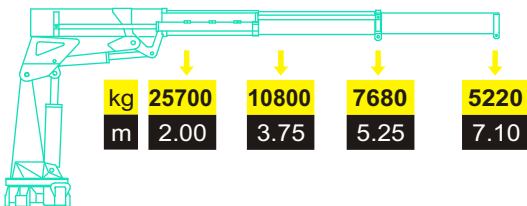
## STCB 51000.2

kg  
3300



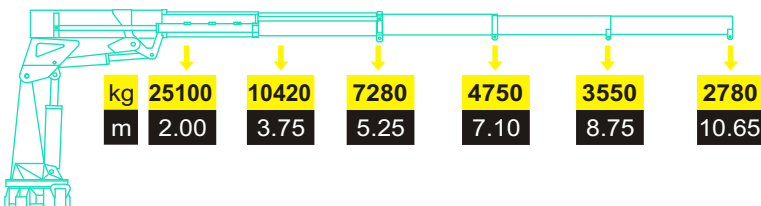
## STCB 51000.3

kg  
3600



## STCB 51000.5

kg  
3900



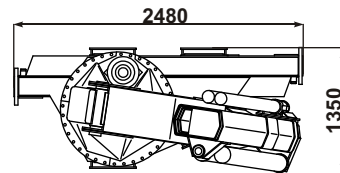
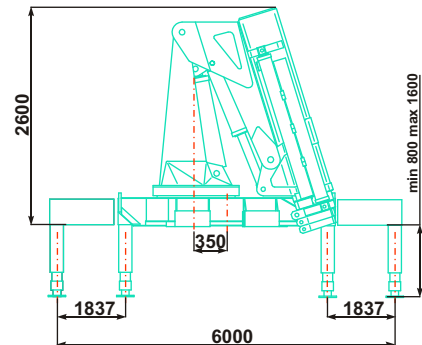
### CARATTERISTICHE TECNICHE

|                          |     |       |
|--------------------------|-----|-------|
| MOMENTO MAX SOLLEVAMENTO | 442 | kNm   |
| ROTAZIONE CONTINUA       |     |       |
| MOMENTO DI ROTAZIONE     | 40  | kNm   |
| PRESSIONE DI ESERCIZIO   | 305 | bar   |
| PORTATA AL DISTRIBUTORE  | 75  | l/min |



### TECHNICAL DATA

|                             |     |       |
|-----------------------------|-----|-------|
| MAX LIFTING MOMENT          | 442 | kNm   |
| CONTINUOUS ROTATION         |     |       |
| SLEWING MOMENT              | 40  | kNm   |
| WORKING PRESSURE            | 305 | bar   |
| DELIVERY TO THE DISTRIBUTOR | 75  | l/min |

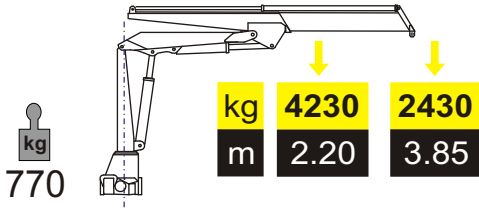


NEW  
**STERN**  
INTERNATIONAL

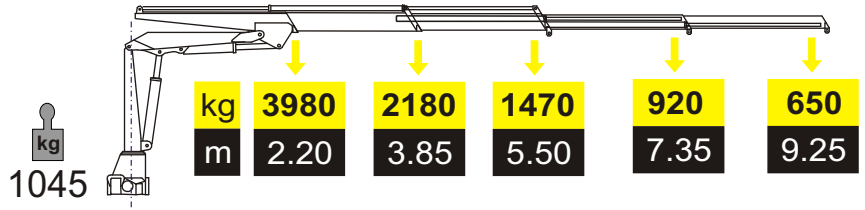
Via Bovi Campeggi, 6  
40131 Bologna

e-mail: [sterninternational@libero.it](mailto:sterninternational@libero.it)

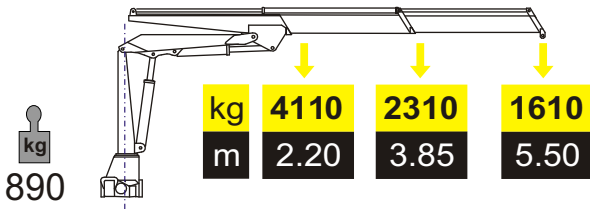
### STC 11500.1



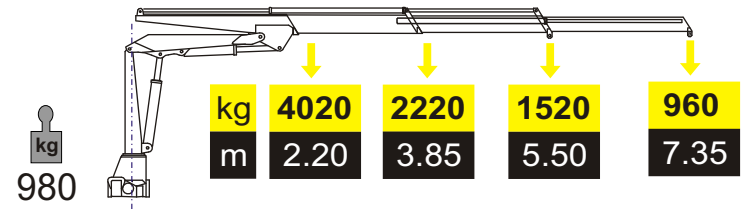
### STC 11500.4



### STC 11500.2



### STC 11500.3

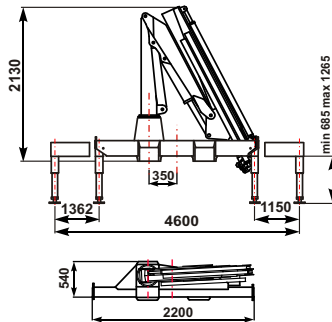


#### CARATTERISTICHE TECNICHE

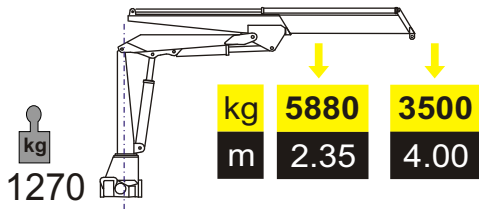
|                          |      |       |
|--------------------------|------|-------|
| MOMENTO MAX SOLLEVAMENTO | 95   | kNm   |
| SFILAMENTO IDRAULICO     | 9.3  | m     |
| ROTAZIONE                | 410° |       |
| MOMENTO DI ROTAZIONE     | 12   | kNm   |
| PRESSIONE DI ESERCIZIO   | 295  | bar   |
| PORTATA AL DISTRIBUTORE  | 24   | l/min |

#### TECHNICAL DATA

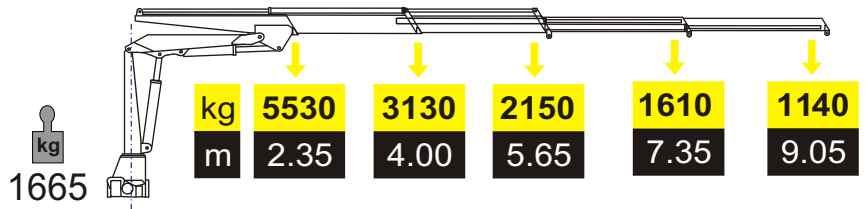
|                             |      |       |
|-----------------------------|------|-------|
| MAX LIFTING MOMENT          | 95   | kNm   |
| HYDRAULIC OUTREACH          | 9.3  | m     |
| SLEWING                     | 410° |       |
| SLEWING MOMENT              | 13   | kNm   |
| WORKING PRESSURE            | 295  | bar   |
| DELIVERY TO THE DISTRIBUTOR | 24   | l/min |



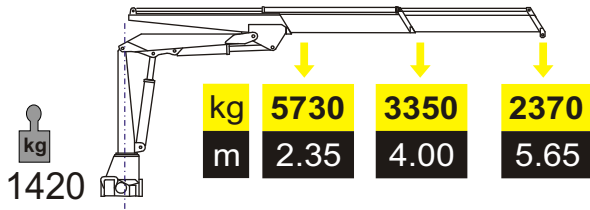
### STC 17500.1



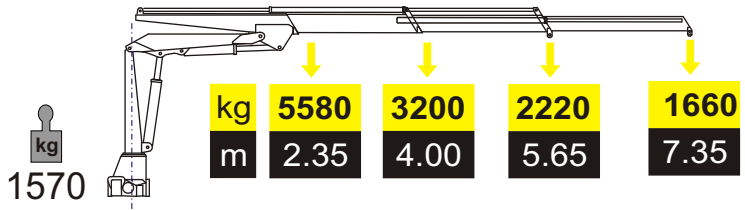
### STC 17500.4



### STC 17500.2



### STC 17500.3

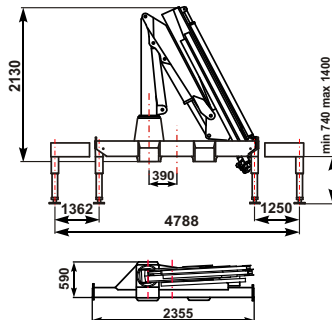


#### CARATTERISTICHE TECNICHE

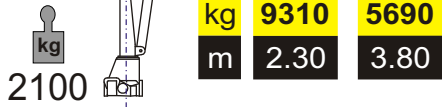
|                          |      |       |
|--------------------------|------|-------|
| MOMENTO MAX SOLLEVAMENTO | 142  | kNm   |
| SFILAMENTO IDRAULICO     | 9.1  | m     |
| ROTAZIONE                | 410° |       |
| MOMENTO DI ROTAZIONE     | 26   | kNm   |
| PRESSIONE DI ESERCIZIO   | 305  | bar   |
| PORTATA AL DISTRIBUTORE  | 34   | l/min |

#### TECHNICAL DATA

|                             |      |       |
|-----------------------------|------|-------|
| MAX LIFTING MOMENT          | 142  | kNm   |
| HYDRAULIC OUTREACH          | 9.1  | m     |
| SLEWING                     | 410° |       |
| SLEWING MOMENT              | 26   | kNm   |
| WORKING PRESSURE            | 305  | bar   |
| DELIVERY TO THE DISTRIBUTOR | 34   | l/min |

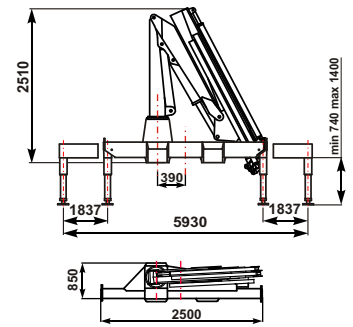


### STC 26000.1

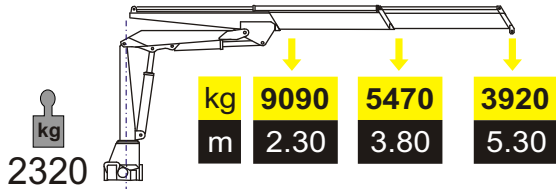


**CARATTERISTICHE TECNICHE**  
 MOMENTO MAX SOLLEVAMENTO 220 kNm  
 SFILAMENTO IDRAULICO 8.7 m  
 ROTAZIONE 410°  
 MOMENTO DI ROTAZIONE 36 kNm  
 PRESSIONE DI ESERCIZIO 315 bar  
 PORTATA AL DISTRIBUTORE 51 l/min

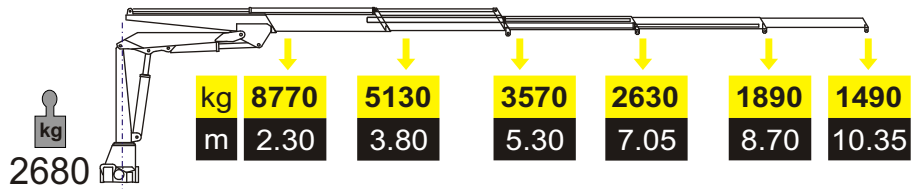
**TECHNICAL DATA**  
 MAX LIFTING MOMENT 220 kNm  
 HYDRAULIC OUTREACH 8.7 m  
 SLEWING 410°  
 SLEWING MOMENT 36 kNm  
 WORKING PRESSURE 315 bar  
 DELIVERY TO THE DISTRIBUTOR 51 l/min



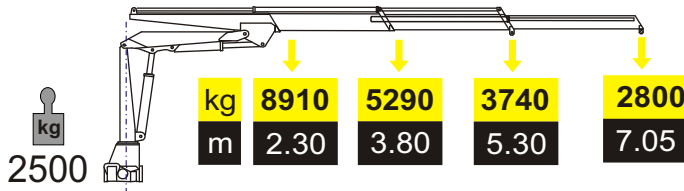
### STC 26000.2



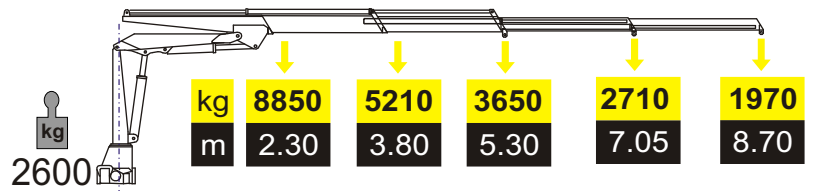
### STC 26000.5



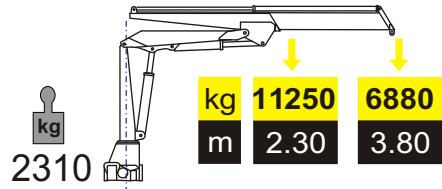
### STC 26000.3



### STC 26000.4

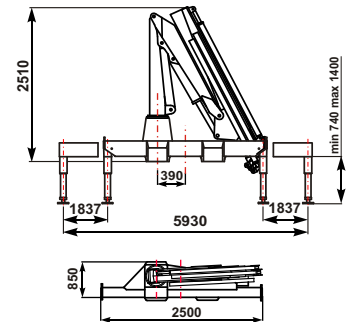


### STC 30000.1

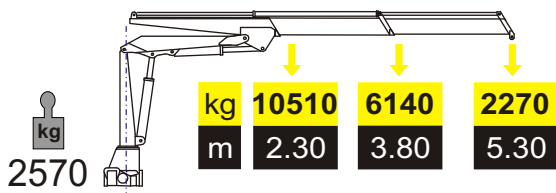


**CARATTERISTICHE TECNICHE**  
 MOMENTO MAX SOLLEVAMENTO 220 kNm  
 SFILAMENTO IDRAULICO 8.7 m  
 ROTAZIONE 410°  
 MOMENTO DI ROTAZIONE 36 kNm  
 PRESSIONE DI ESERCIZIO 315 bar  
 PORTATA AL DISTRIBUTORE 51 l/min

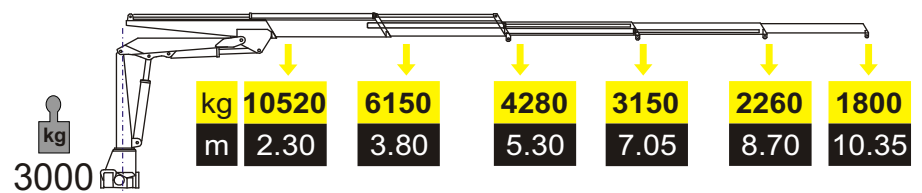
**TECHNICAL DATA**  
 MAX LIFTING MOMENT 220 kNm  
 HYDRAULIC OUTREACH 8.7 m  
 SLEWING 410°  
 SLEWING MOMENT 36 kNm  
 WORKING PRESSURE 315 bar  
 DELIVERY TO THE DISTRIBUTOR 51 l/min



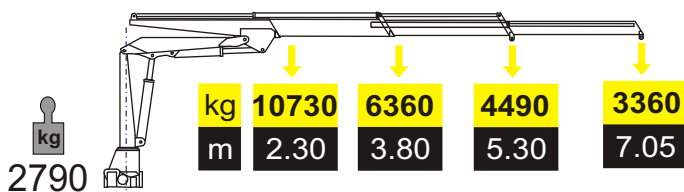
### STC 30000.2



### STC 30000.5



### STC 30000.3



### STC 30000.4

